



**ST. ANASTASIA PARISH COMMUNITY
MASTER PLAN PROPOSAL**

AGENDA

- **Strategic Plan (2022)**
- **Existing Site Plan**
- **Proposed Phases 1 and 2**
 - **Preschool**
 - **Parish Life Center/Field**
- **Proposed Phase 3-5**

STRATEGIC PLAN GOALS (2022)

1

St. Anastasia Catholic School will celebrate its enduring value and identity as a vibrant and welcoming Catholic community and parish school through clear articulation of statements of mission, philosophy, and vision.

2

St. Anastasia Catholic School will operate with an organizational structure that maximizes leadership and provides staffing resources and expertise to support high quality experiences and outcomes for students, staff, and mission advancement.

3

St. Anastasia Catholic School will build upon its tradition of academic excellence by pursuing opportunities and innovations representative of an enduring commitment to academic excellence and faith formation across all grades.

4

St. Anastasia Catholic School will develop and implement a formal marketing and enrollment management program to sustain optimal enrollment and grow awareness of the desirability of the school

5

St. Anastasia Catholic School will grow awareness of its compelling case for the support of its mission and expand philanthropic support for funding programs, endowment, and capital campaign opportunities.

6

St. Anastasia Catholic School will develop a multi-year facilities plan that ensures a safe and secure parish school campus where students can pray, grow, learn, play, and perform.



GOAL 6

St. Anastasia Catholic School will develop a multi-year facilities plan that ensures a safe and secure parish school campus where students can pray, grow, learn, play, and perform.



MASTER PLANNING PROCESS

Grow with Purpose

WISH LIST FOR PLAN

- **Address Campus Security**
- **Preschool**
- **Parish Life Center**
 - **Parish Hall & Gymnasium**
- **Full-size Field Sports and Events**
- **HVAC for School**
- **Remodel Rectory for Priests**
- **Expand to 2 Classes per Grade**

PLANNING PROCESS

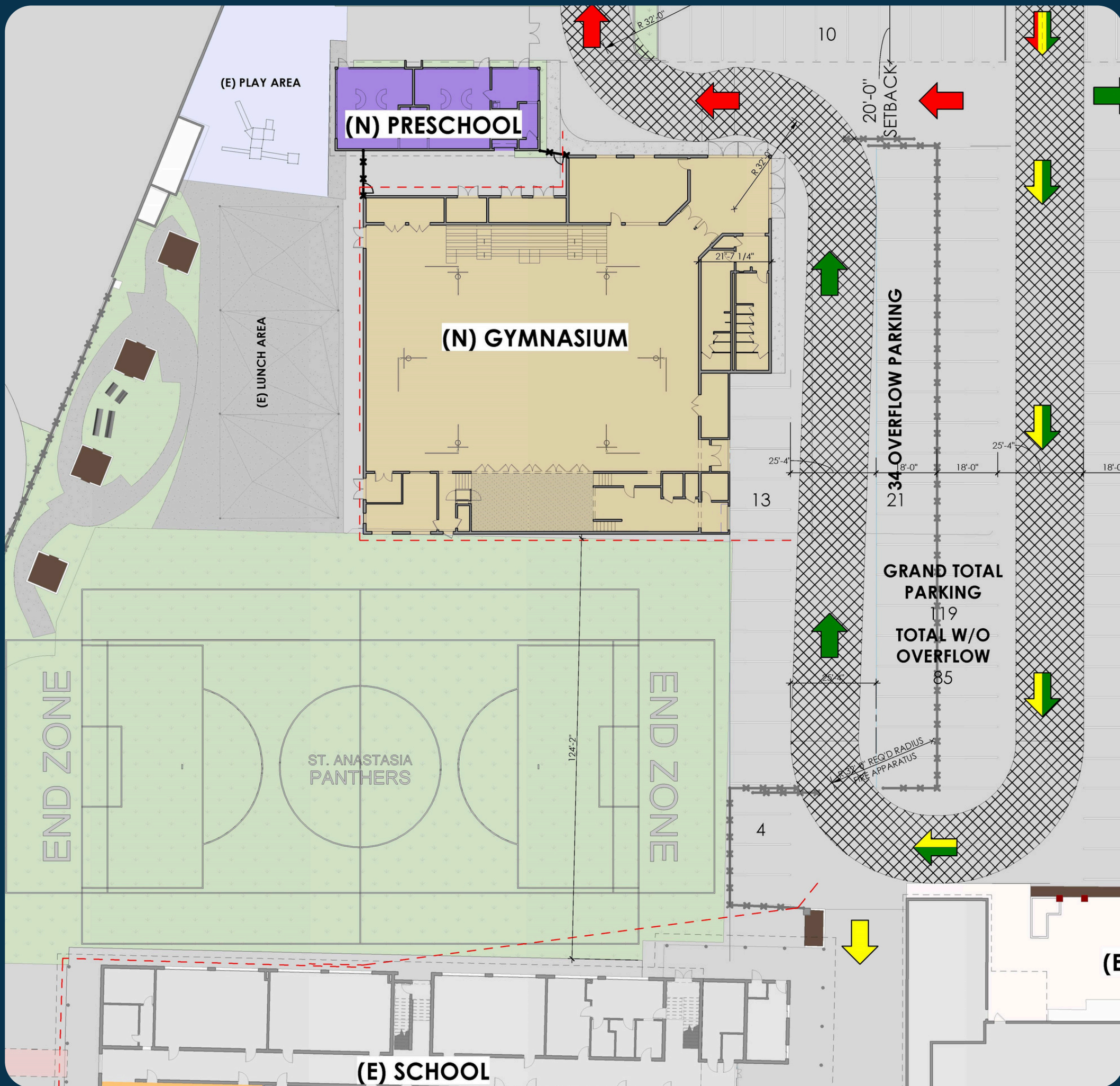
- **Secure Architect Firm**
- **Architectural Designs**
- **Identify Phases**
- **Fundraising Feasibility**
- **Archdiocese Support**
- **Capital Campaign**

CURRENT SITE PLAN



PHASES 1 & 2

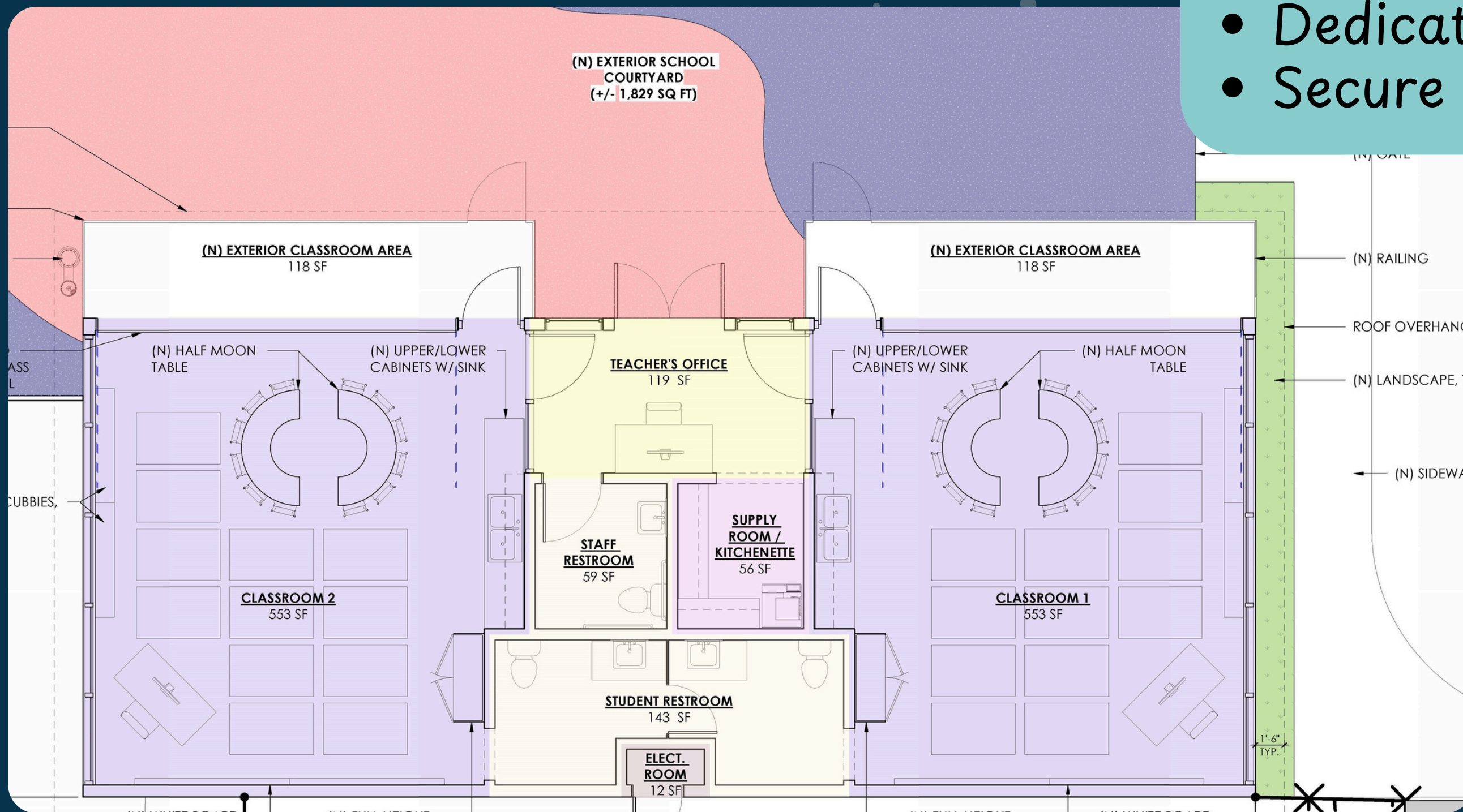
**Preschool
Parish Life Center
(Gym/Auditorium)
Full-Size Field
Traffic & Parking**



BRAND-NEW PRESCHOOL

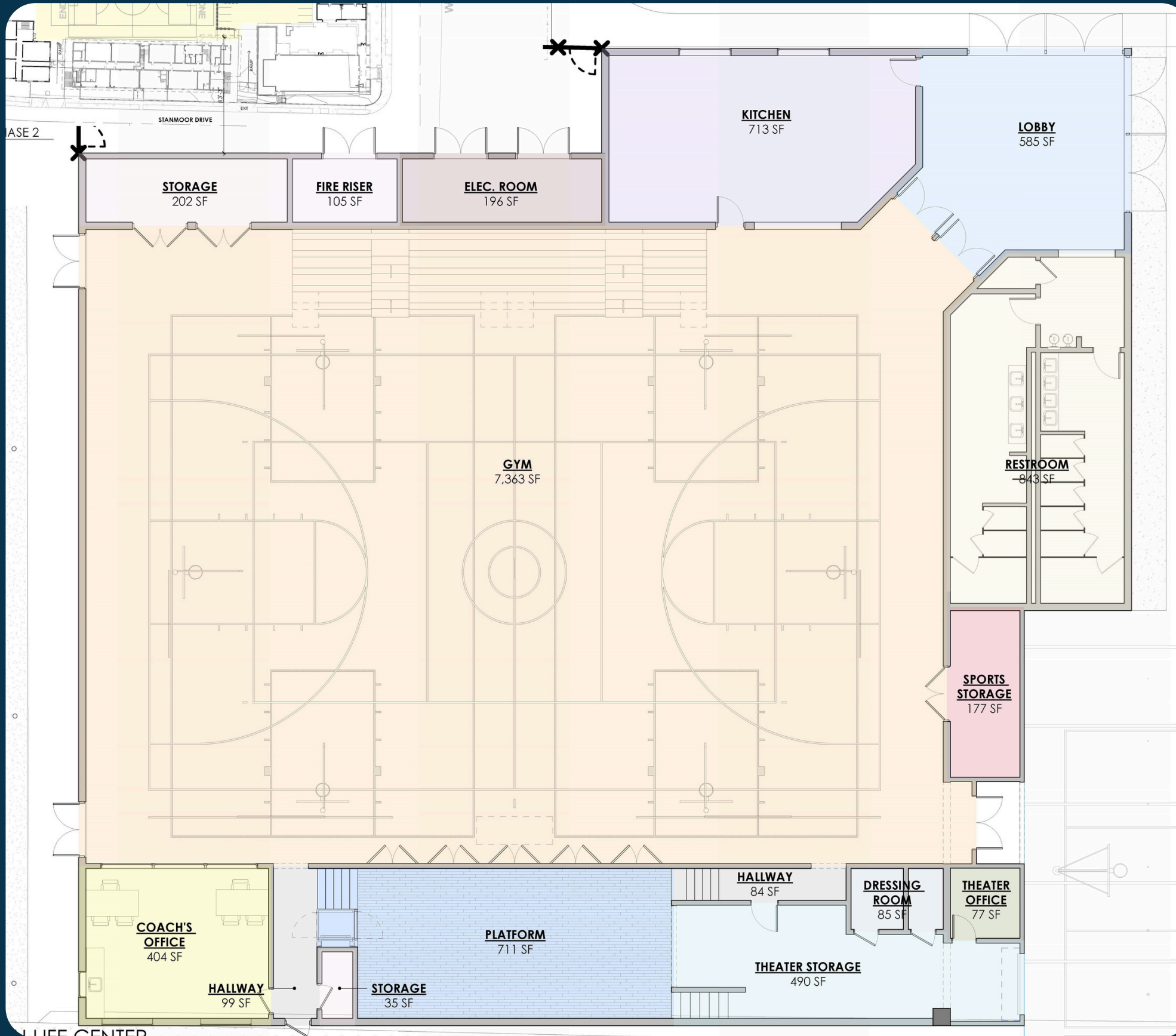
FEATURES

- 2 Classrooms (2-3YO, 3-4YO)
- Secure Entrance
- Staff Office Space
- Restrooms (staff & child)
- Dedicated Outdoor Play Spaces
- Secure Entry/Exit



**SHEA
FAMILY
CHARITIES**

PARISH LIFE CENTER



FEATURES

- Full-Size Basketball & Volleyball Courts
- Stage, Seating, Storage
- Commercial Kitchen
- Athletics Offices
- Secure Entrance/Exit
- Outdoor Blacktop Space
- Parking Considerations

FULL-SIZE FIELD & PARKING

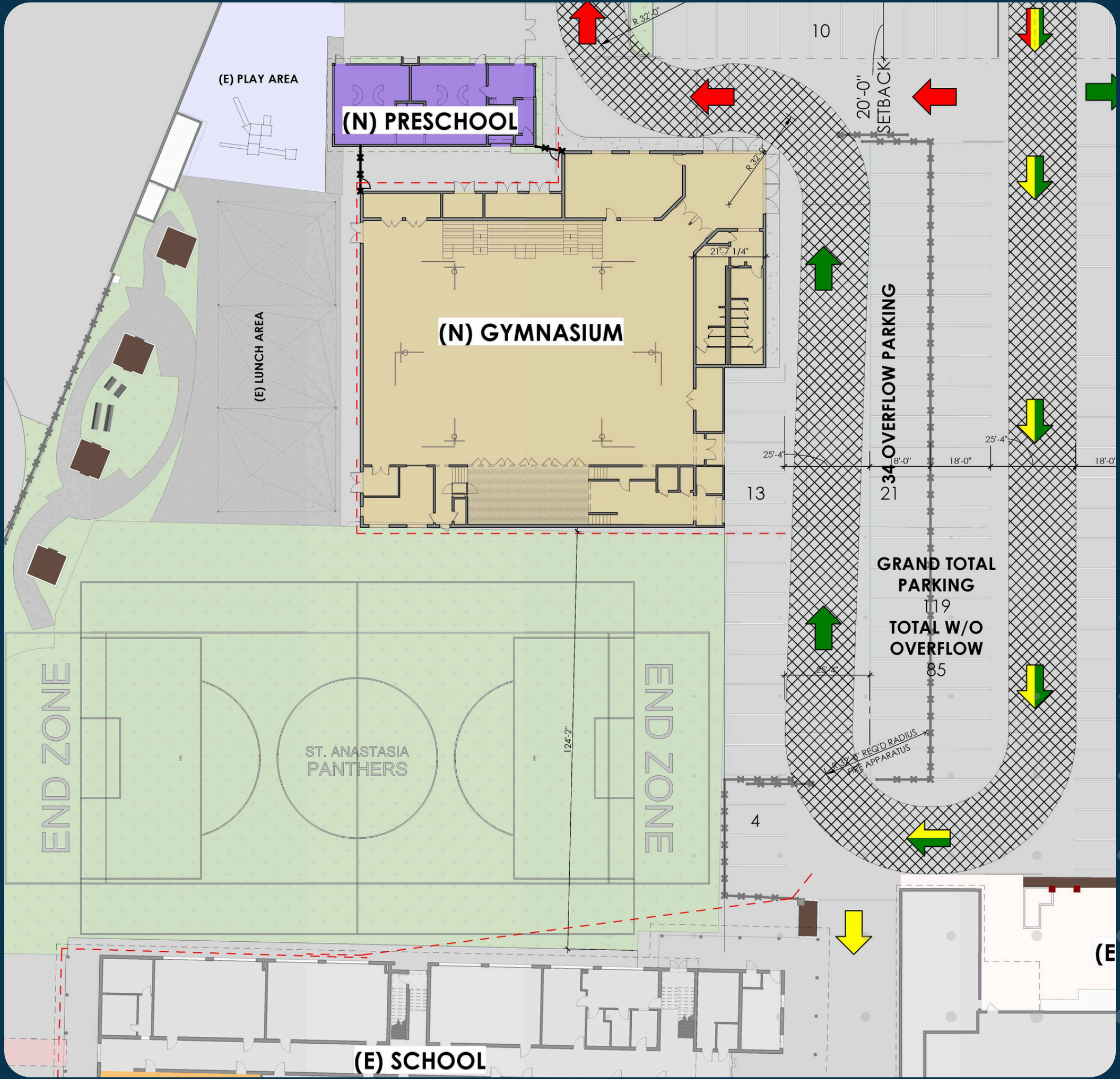


FEATURES

- Full-Size Turf Field for U12 Soccer & Flag Football
- Expanded Green Space
- Host events on campus

PARKING

- **Current:** 117 Total
 - (69 w/o overflow)
- **New:** 119 Total
 - (85 w/o overflow)



PHASES 1 & 2

COST: \$15.5MM

PRESCHOOL TIMING
 Fundraising: Complete
 Construction: 2025-2026

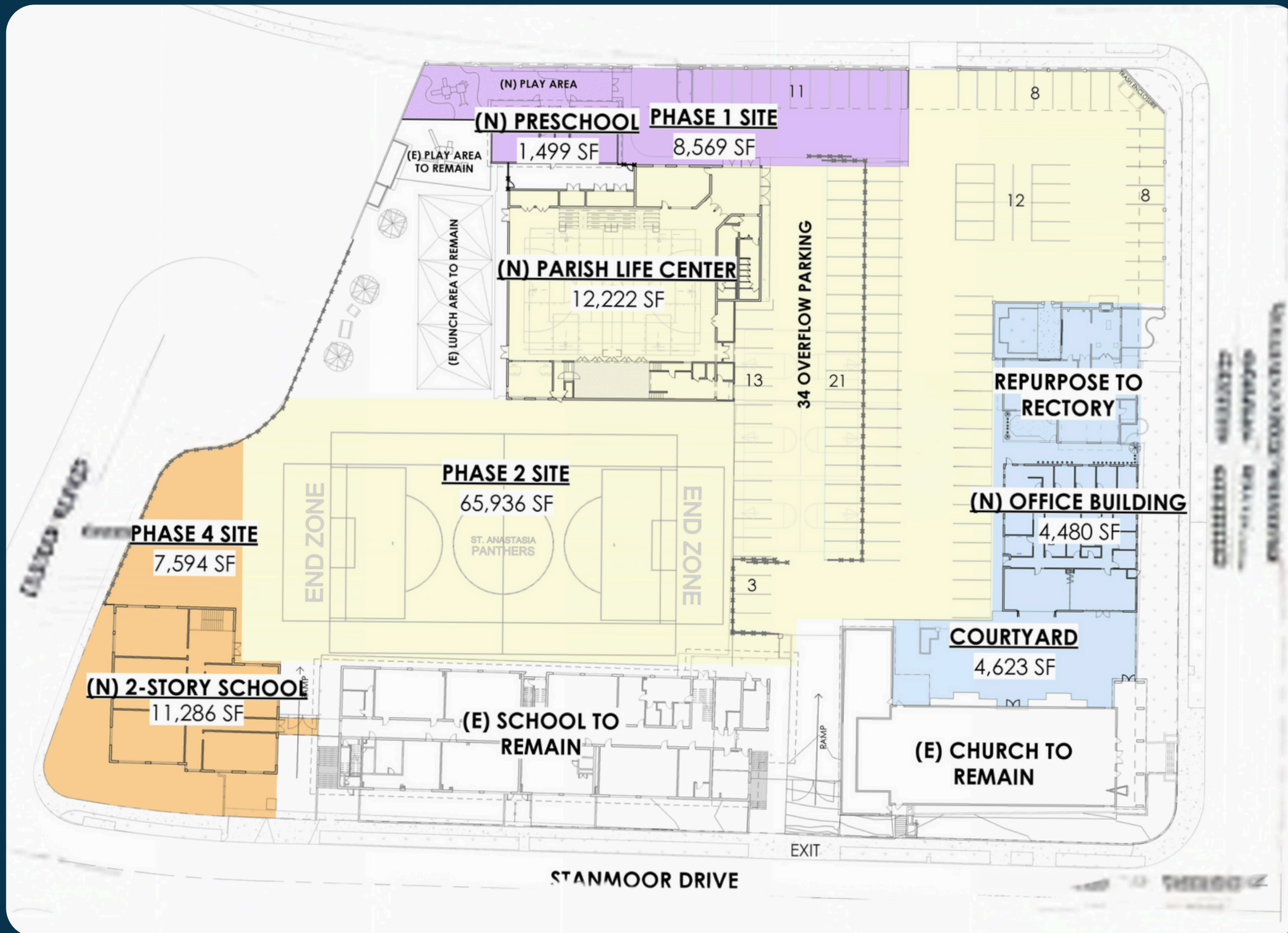
**PARISH LIFE CENTER,
 FIELD & PARKING**
 Fundraising and
 Construction thru 2031

PHASES 3 & 4

- Repurpose Rectory
 - Staff Offices &
 - Meeting space
- Parish Center
- Expanded Courtyard
- New Middle School Building

PARKING

- **Current:** 117 Total
 - (69 w/o overflow)
- **New:** 119 Total
 - (85 w/o overflow)



TIMING
2030-2035

COST: \$15.5MM

MASTER PLANNING PROCESS NEXT STEPS

Surrounding Community Outreach

FEASIBILITY STUDY – CAPITAL CAMPAIGN

- **Interviews**
- **Surveys (Mailed & Online)**
- **Support for Plans**
- **Capacity to Give**
- **Commitment to Projects**

- **Fundraising**
- **Construction**
- **Future Planning**



THANK YOU