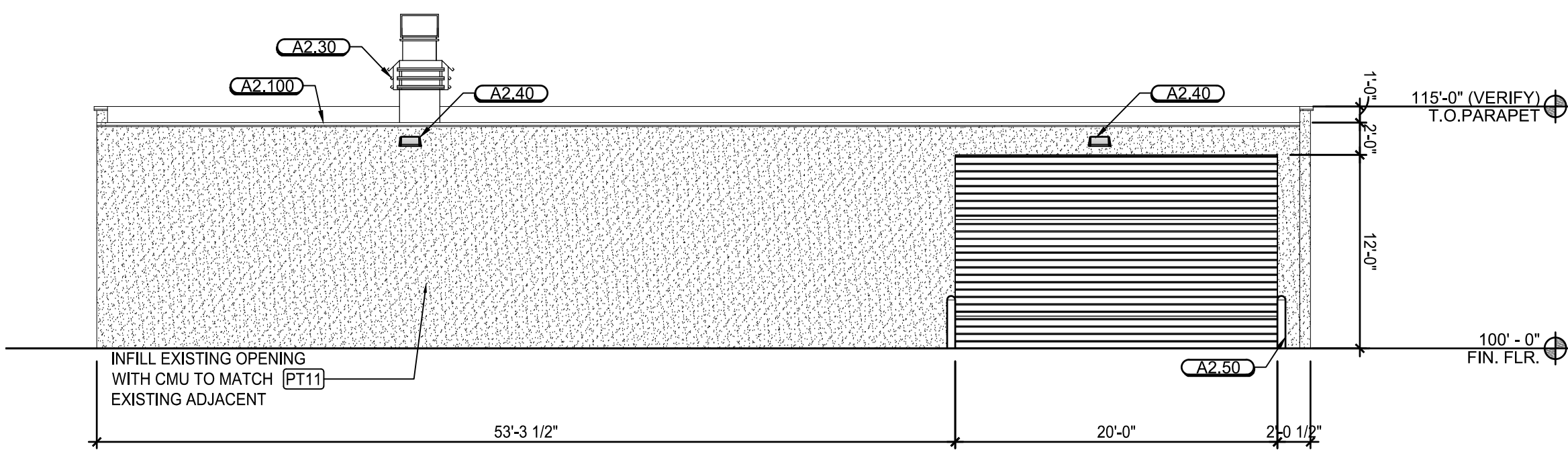
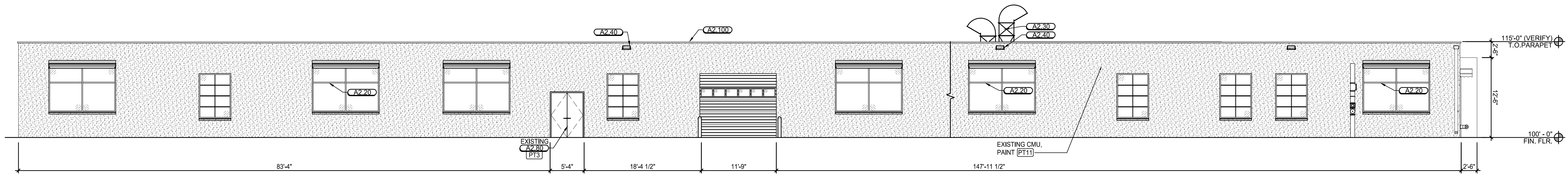


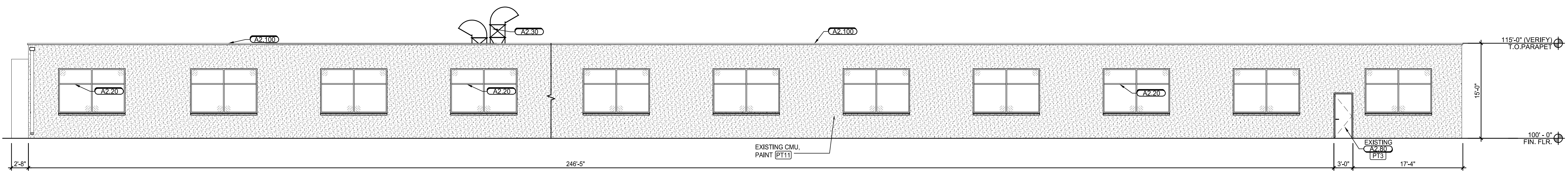
01 FRONT ELEVATION
SCALE: 1/8" = 1'-0"



02 BACK ELEVATION
SCALE: 1/8" = 1'-0"



03 RIGHT ELEVATION
SCALE: 1/8" = 1'-0"



04 LEFT ELEVATION
SCALE: 1/8" = 1'-0"

- GENERAL NOTES:**
1. ALL EXISTING EXTERIOR MATERIALS TO REMAIN.
 2. REFER SHEET A1.3 FOR FINISH AND MATERIAL DESIGNATIONS.

- KEY NOTES:**
- A2.10 SIGNAGE (BY OTHERS).
 - A2.20 RECAULK ALL EXISTING STOREFRONT / GLAZING, WINDOWS & DOOR OPENINGS.
 - A2.30 EXHAUST AND AIR INTAKE (REF. PAINT BOOTH SHEETS). ENSURE THAT THE BOTTOM OF THE EXHAUST OPENING IS 6 FT. ABOVE THE ROOF SURFACE.
 - A2.40 RELAMP ALL EXISTING WALL MOUNTED LIGHT FIXTURES (REFER MEP).
 - A2.50 6" STEEL PIPE BOLLARD, PAINT "TRAFFIC YELLOW"
 - A2.60 FACTORY FINISHED OVERHEAD DOOR
 - A2.70 STOREFRONT/GLAZING
 - A2.80 EXISTING HOLLOW METAL DOOR AND FRAME TO BE PAINTED.
 - A2.90 METAL GUTTER PAINTED
 - A2.100 METAL PARAPET COPING PAINTED
 - A2.110 METAL DOWNSPOUT PAINTED

- FINISH LEGEND:**
- PT3 NOMADIC DESERT SW 6107
 - PT5 KILIM BEIGE SW 6106
 - PT9 TRICORN BLACK SW 6258 LOW SHEEN - ULTRADEEP BASE
 - PT11 SMOKEHOUSE SW7033