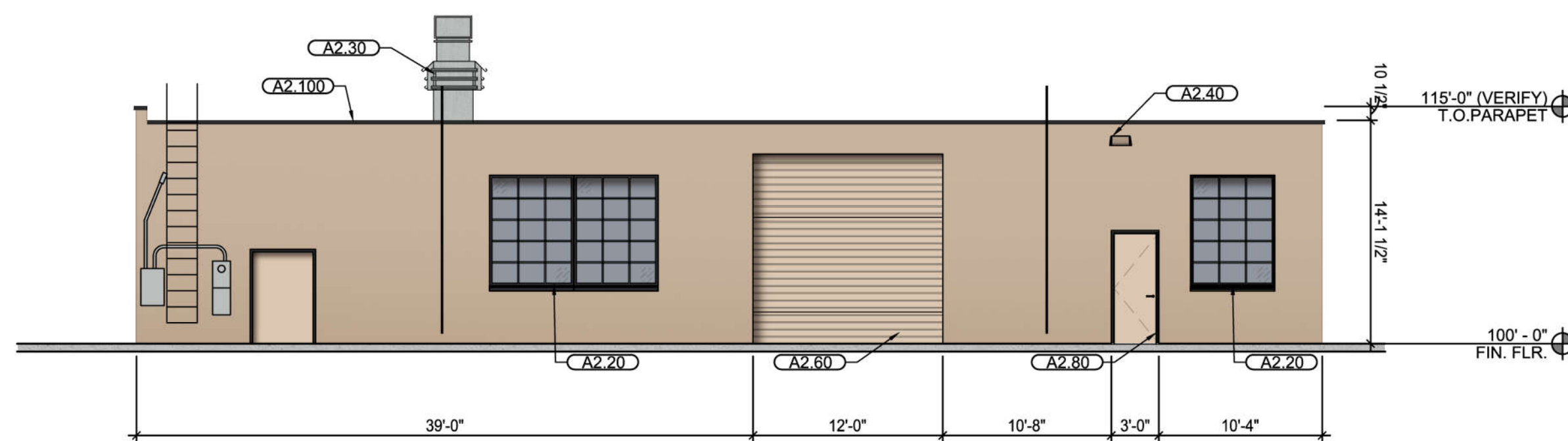
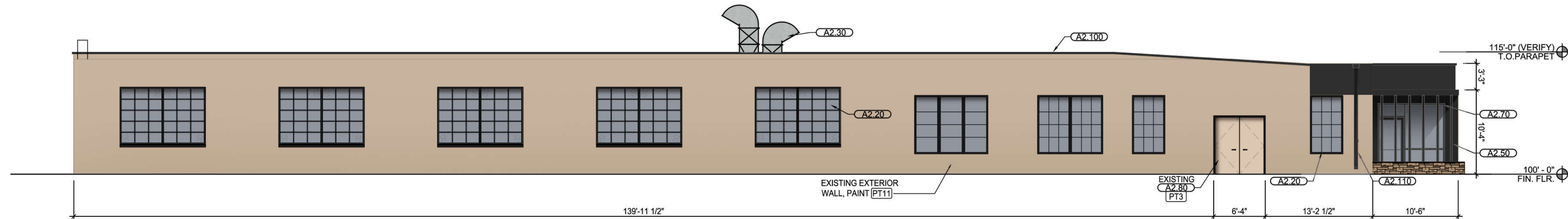


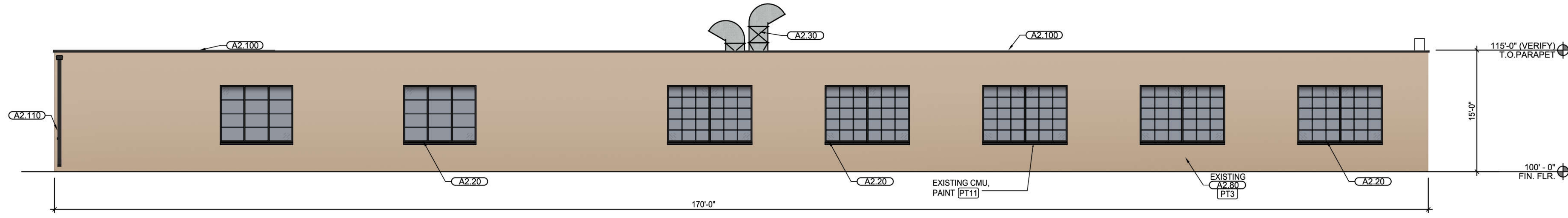
01 FRONT ELEVATION
SCALE: 1/8" = 1'-0"



02 BACK ELEVATION
SCALE: 1/8" = 1'-0"



03 RIGHT ELEVATION
SCALE: 1/8" = 1'-0"



04 LEFT ELEVATION
SCALE: 1/8" = 1'-0"

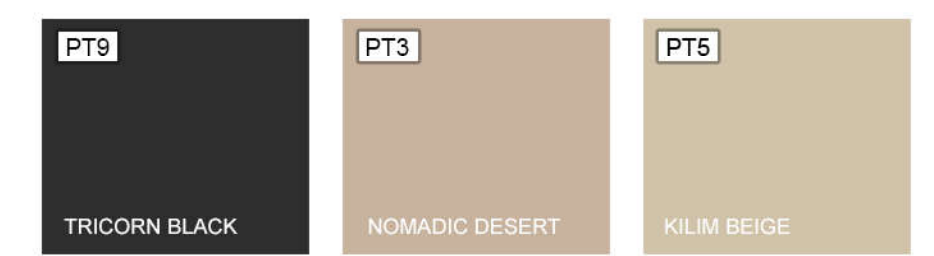
GENERAL NOTES:

1. ALL EXISTING EXTERIOR MATERIALS TO REMAIN.
2. REFER SHEET A1.3 FOR FINISH AND MATERIAL DESIGNATIONS.

- KEY NOTES:**
- (A2.10) SIGNAGE (BY OTHERS).
 - (A2.20) RECAULK ALL EXISTING STOREFRONT / GLAZING, WINDOWS & DOOR OPENINGS.
 - (A2.30) EXHAUST AND AIR INTAKE (REF. PAINT BOOTH SHEETS). ENSURE THAT THE BOTTOM OF THE EXHAUST OPENING IS 6 FT. ABOVE THE ROOF SURFACE.
 - (A2.40) RELAMP ALL EXISTING WALL MOUNTED LIGHT FIXTURES (REFER MEP).
 - (A2.50) 3" STEEL PIPE COLUMNS, PAINT
 - (A2.60) EXISTING FINISHED OVERHEAD DOOR
 - (A2.70) EXISTING STOREFRONT/GLAZING
 - (A2.80) EXISTING HOLLOW METAL DOOR AND FRAME TO BE PAINTED.
 - (A2.90) METAL GUTTER PAINTED
 - (A2.100) METAL PARAPET COPING PAINTED
 - (A2.110) METAL DOWNSPOUT PAINTED

FINISH LEGEND:

- [PT3] NOMADIC DESERT SW 6107
- [PT5] KILIM BEIGE SW 6106
- [PT9] TRICORN BLACK SW 6258 LOW SHEEN - ULTRADEEP BASE



ARCHITECT
BRET FLORY
1913 GARDENGROVE COURT
PLANO, TEXAS 75075
PH: 972.467.9749
bflory@crossarchitects.com

CALIBER COLLISION

CONCEPTUAL ELEVATIONS

LOS ANGELES, CA

DRAWN	DATE	PROJECT NO.	CITY PROJECT NO.	SHEET NO.
-	21.08.30	21025	-	-