

GENERAL NOTES

- KITCHEN EQUIPMENT SUPPLIER SHALL SET IN PLACE ALL KITCHEN AND BAR EQUIPMENT (INCLUDING WALK-IN BOXES). KITCHEN EQUIPMENT VENDOR IS RESPONSIBLE FOR CONNECTING CONTROL WIRING. GC IS RESPONSIBLE FOR ALL OTHER FINAL ELECTRICAL AND PLUMBING CONNECTIONS TO EQUIPMENT. GC IS RESPONSIBLE FOR CONTROL AND INTERCONNECTION WIRING FOR WALK-IN BOXES AND HOOD. SEE WIRING DIAGRAMS ON ELECTRICAL DRAWINGS.
- EQUIPMENT VENDOR TO FIRMLY ANCHOR ANY FURNITURE OR EQUIPMENT WHICH IS REQUIRED TO BE FIXED. CAULK AND SEAL TO WALLS AND FLOOR.
- CO2 VIA BULK STORAGE (#340). CO2 SUPPLIER TO PROVIDE ALL TUBING AND PUMP CONNECTIONS. G.C. TO PROVIDE GOWN AND LOCK TO SECURE TANKS TO WALL.
- COORDINATE EXACT LOCATION AND INSTALLATION OF BEER TAPS (105) AND PIPING FOR BEER LINES WITH BEER EQUIPMENT SUPPLIER.
- TV MONITORS AND YOKES, PROJECTORS AND SCREENS, AND SUSPENSION SYSTEM BY AN CONTRACTOR. TV'S TO BE MOUNTED AT 8'-0" AFF TO BOTTOM OF TV, UNLESS OTHERWISE NOTED ON DRAWINGS OR DIRECTED OTHERWISE BY OWNER. ALL TV'S ARE TO BE SUSPENDED FROM CEILING. PROJECTORS AND SCREENS TO BE SUSPENDED FROM HOOF CASTS WITH THREADED ROD AND UNISTRUT. SEE INTERIOR ELEVATIONS FOR HEIGHTS.
- SEE THIS SHEET, KITCHEN DRAWINGS AND ELECTRICAL DRAWINGS FOR OFFICE, FOOD SERVICE AND BACK BAR EQUIPMENT LAYOUTS.
- INSTALL MENU BOXES AT LOCATIONS DETERMINED BY OWNER.
- KITCHEN EQUIPMENT BELOW HOOD TO BE ON CASTERS AND INSTALLED WITH QUICK DISCONNECTS FOR CLEANING PURPOSES.
- 3" GROMMET IN COUNTERTOP AT MONITORS, PRINTERS, FAX MACHINES, ETC. COORDINATE EXACT LOCATION WITH OWNER.
- MONITORS AND YOKES, PROJECTORS AND SCREENS, BY AN CONTRACTOR. COORDINATE POWER FOR PROJECTORS WITH ELECTRICAL CONTRACTOR.
- GC TO SEAL WALK-IN BOX PENETRATIONS.
- ACCESSIBLE TABLES TO BE PROVIDED WHERE SHOWN ON PLAN WITH H/C SYMBOL.
- SELF SERVICE SHELVES AND DISPENSING DEVICES FOR TABLEWARE, DISHWASHER, CONDIMENTS, FOOD AND BEVERAGES SHALL NOT BE MORE THAN 54" AFF, NOT LESS THAN 9" AFF AND ACCESSIBLE FROM WITHIN 25" FROM EDGE OF COUNTER.
- KITCHEN VENDOR TO INCLUDE RECHARGING OF ALL EXISTING REFRIGERATION LINES.
- NEW RESIDENTIAL GRADE APPLIANCES PROVIDED AND INSTALLED SHALL BE ENERGY STAR LABELED IF ENERGY STAR IS APPLICABLE TO THAT EQUIPMENT OR APPLIANCE.
- SOAP DISPENSER MOUNTED AT 44" AFF TO CENTERLINE OF DISPENSING LINE. INSTALLED BY OWNER.
- PAPER TOWEL DISPENSER MOUNTED AT 42" AFF TO BOTTOM OF PAPER TOWEL SLOT. INSTALLED BY GC.

SYMBOL LEGEND

	FURNISHINGS		MILLWORK
	FIXTURES		SINK ACCESSORIES
SINK ACCESSORIES			
MARK	DESCRIPTION	REMARKS	
01	HAND SOAP DISPENSER BY OWNER	1	
07	PAPER TOWEL DISPENSER BY OWNER	2	
	TOWEL ROOM DETAILS-SEE A700. BAR DETAILS-SEE A701/A702		

SEAT COUNT

AREA	SEATS PER AREA
DINING 'A'	138
DINING 'B'	86
DINING 'C'	18
BAR	16
DINING TOTAL	258
PATIO	32
PATIO TOTAL	36
SEATING TOTAL	295

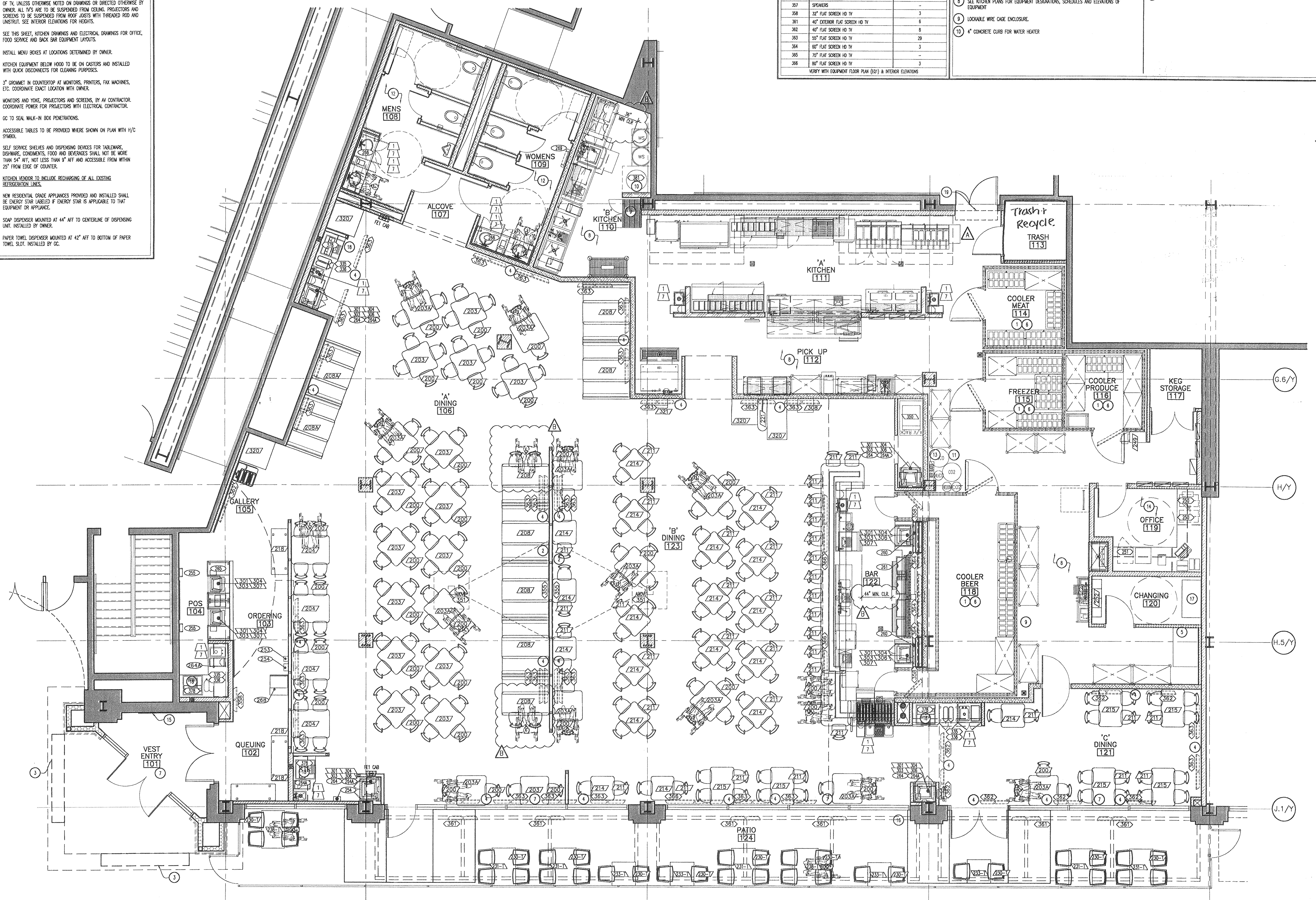
AV SCHEDULE

MARK	DESCRIPTION	QUANTITIES
350	AUDIO/VIDEO EQUIPMENT RACK	1
351/355	PROJECTOR/PROJECTION SCREENS 16:9 RATIO	2
357	SPEAKERS	-
358	32" FLAT SCREEN HD TV	3
361	40" EXTERIOR FLAT SCREEN HD TV	6
362	40" FLAT SCREEN HD TV	8
363	55" FLAT SCREEN HD TV	29
364	60" FLAT SCREEN HD TV	3
365	70" FLAT SCREEN HD TV	-
366	80" FLAT SCREEN HD TV	3

VERIFY WITH EQUIPMENT FLOOR PLAN (E01) & INTERIOR ELEVATIONS

KEY NOTES

- KITCHEN EQUIPMENT VENDOR TO VERIFY CLEAR DIMENSIONS PRIOR TO ORDERING WALK-IN BOXES.
- PROJECTOR SCREENS PROVIDED BY VENDOR.
- LINE OF SOUNGE ABOVE.
- SEE SHEET A800 FOR TV HEIGHTS.
- GRASS RECOVERY SYSTEM - ON 4" HIGH CONCRETE PAD IN BASEMENT LEVEL EXISTING TRASH ENCLOSURE. SEE A601 & MEP FOR DETAILS, ROUGH-IN INFORMATION, SCOPE OF WORK, ETC. COORDINATE FINAL LOCATION WITH LANDSCAPE.
- 8ST CLOSURE ANGLE AT COOLER TOP/SIDE AND ADJACENT WALL. FURNISHED BY KITCHEN EQUIPMENT VENDOR. INSTALLED BY G.C. SEE G5 & 07/A501.
- WINDOW SHAKES TO BE PROVIDED ON ALL WINDOWS WITHOUT SPANDREL GLASS - SHAKES BMM VENDOR.
- SEE KITCHEN PLANS FOR EQUIPMENT DESIGNATIONS, SCHEDULES AND ELEVATIONS OF EQUIPMENT.
- LOCKABLE WIRE CAGE ENCLOSURE.
- 4" CONCRETE CURB FOR WATER HEATER.
- CHAIN TANKS TO WALL.
- SEE A700 FOR LOCATION OF TOILET ACCESSORIES.
- LOCATION OF BEER BLASTER. VERIFY LOCATION AND SIZE W/ RACY DRAHT CO.
- SEE ENLARGED PLANS, ELEVATIONS & DETAILS ON ARCHITECTURAL AND MEP DRAWINGS.
- COMMUNITY BOARD - VERIFY LOCATION WITH BMM CONSTRUCTION MANAGER.
- PROVIDE POWER & DATA CONNECTIONS AS REQUIRED FOR FUTURE ATM AT THIS LOCATION.
- FURN VENDOR TO PROVIDE 24" X 48" DRESSING ROOM BENCH.
- MILLWORK PROVIDED SOGA DISPENSER STAND AND BLACK COVER PLATE. STAND PROVIDES SUPPORT FOR SOLID SURFACE COUNTERS AND DROP IN SOGA DISPENSER. PAINT STAND BLACK TO MATCH COVER PLATE.
- EXISTING AIR CURTAIN TO REMAIN. S.E.D.



EQUIPMENT FLOOR PLAN
SCALE: 1/4"=1'-0"

MBH
2470 Harwin Square Loop
Alhambra, CA 91801
Tel: 510 885 8843
Fax: 510 885 1811

REGISTERED ARCHITECT
DANIEL M. HEATY
No. C-12819
& 30137
Exp. 06/30/14
STATE OF CALIFORNIA

BUFFALO WILD WINGS
STORE DESIGN
5500 WAZATA BLVD., SITE 1600
MINNEAPOLIS, MN 55416
PHONE 952.993.9943
FAX 952.993.9787

BUFFALO WILD WINGS
LOCATED AT:
HOWARD HUGHES PROMENADE
6081 CENTER DRIVE
LOS ANGELES, CA 90045

DO NOT SCALE DRAWINGS
CONTRACTOR TO VERIFY
ALL EXISTING CONDITIONS
AND DIMENSIONS-NOTIFY
ARCHITECT OF ANY
DISCREPANCIES PRIOR TO
BEGINNING CONSTRUCTION

DRAWING ISSUE

NO.	DESCRIPTION	DATE
1	PERMIT SET	1/17/13
2	PERMIT RESUBMITTAL	3/29/13
3	PERMIT RESUBMITTAL	5/9/13

EQUIPMENT FLOOR PLAN

PROJECT NUMBER
47876

SHEET NUMBER
EQ1

PRINTED 05/06/13 BY: TODDB
DRAWING NAME: EQ-47876.DWG
XXXXXXXXXX